

California Amplifier

PLEASE SELECT:

SATELLITE

WIRELESS BROADBAND

MMDS Video &
Scrambling

Two-Way MMDS

HOME

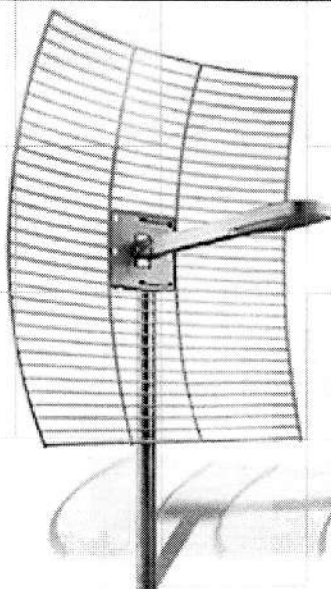
PRODUCTS

ABOUT US

INVESTORS

NEWS

QWIK FIND



PARABOLIC

California Amplifier's high performance provide unparalleled performance MMDS bands

TO LEARN MORE

[passives.pdf](#)

PART NUMBER

130094-130135

DESCRIPTION

24 dBi QLP Parabolic Antenna Asse

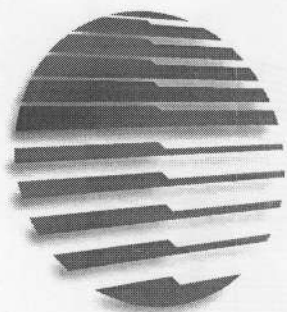
SPECIFICATIONS:

Electrical:

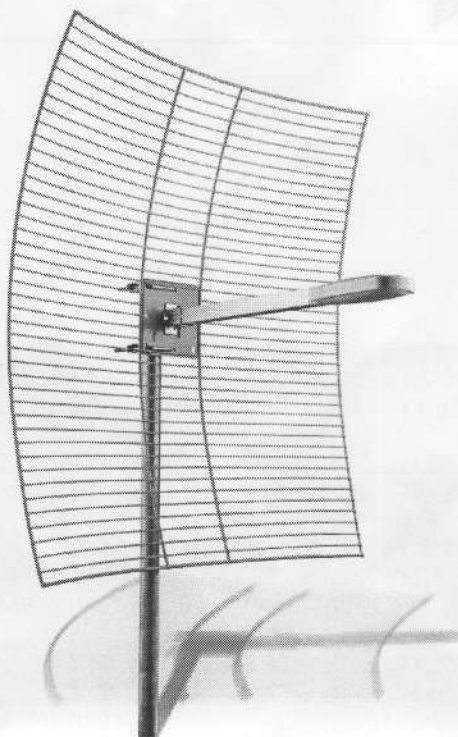
Frequency Range (MHz)	2150-2162, 2400-2483, 2500-2700
Gain	22dB \pm 1dB, 23.5dB \pm 1dB, 24dB \pm 1dB
Efficiency	47%, 48%, 50%
VSWR	1.5:1
3 dB Beamwidth	12.5° \pm 0.5°, 10.0° \pm 1.0°, 9.75° \pm 0.75°
Side Lobe Level	-18 dB \pm 2dB, -20 dB \pm 3dB, -20 dB \pm 3dB
Front-to-Back Ratio over near hemisphere at 180 degrees	21 dB 28 dB
Polarization	Vertical or Horizontal
Cross polarization Rejection	28 dB

Mechanical:

Reflector Type	Wire Grid Parabola
Size	27" x 30"
Weight	5.3 lbs
Surface Accuracy	0.05" RMS
Focal Length	15"
F/d Ratio	0.46 - 0.56
Feed Type	Quasi Log Periodic End Fire Array
Mounting	Stainless Hardware for 3/4-2" O.D. Mast Continuous
Azimuth Adjustment	
Finish	Powder Coat Paint, Gray
Connector	"N" Type Male Environmentally Sealed
Operating Temperature	-40°C to +80°C



California Amplifier



Parabolic Antennas and Passive Feeds

California Amplifier's high performance parabolic antennas provide unparalleled performance across the MDS, ISM and MMDS bands.

Our proprietary feed design, a "Quasi-Log Periodic End Fire Array," is the heart of the package offered exclusively by California Amplifier. Through optimization of the critical physical parameters that affect the co-polarized and cross-polarized radiation patterns, this patented feed provides high interference and multipath rejection than any other parabolic antenna combination.

In addition to narrow beamwidth, the antenna has been engineered with low sidelobes and also offers excellent front-to-back performance.

The reception of digital signals is generally limited by interference from reflections, nearby transmitters, or adjacent wireless services. An antenna's overall performance, its beamwidth, directivity, sidelobes and front-to-back ratio, is the key factor in providing a reliable link.

California Amplifier's parabolic antennas offer exceptional resistance from multipath effects and other interference. This package provides the ideal solution for today's demanding wireless services over MDS, ISM and MMDS spectrum.

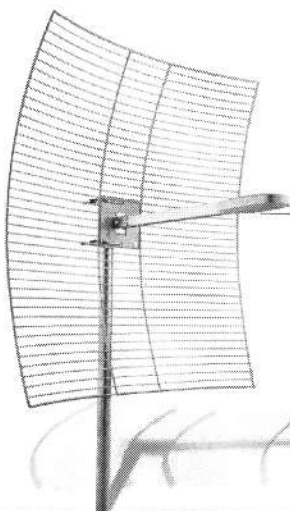
Proprietary quasi-log periodic feed

High Interference and multipath rejection

Excellent front-to-back performance

Easy Installation

ENABLING BROADBAND WIRELESS ACCESS



Parabolic Antennas and Passive Feeds

ISO 9001



Certificate #A3505

Electrical:

Frequency Range (MHz)
Gain
Efficiency
VSWR
3-dB Beamwidth
Side Lobe Level
Front to Back Ratio
over near hemisphere
at 180 degrees
Polarization
Cross Polarization Rejection

130093/130120

21 dBi QLP Parabolic Assembly

2150-2162	2400-2483	2500-2700
19 dB \pm 1 dB	20.5 dB \pm 1 dB	21 dB \pm 1 dB
43%	44%	45%
1.5:1	1.5:1	1.5:1
14.8° \pm 1.2°	13.0° \pm 1.5°	12.5° \pm 1.5°
-18 dB \pm 2dB	-19 dB \pm 3dB	-19 dB \pm 3dB

18 dB	18 dB	18 dB
22 dB	25 dB	27 dB
Vertical or Horizontal		
25 dB	25 dB	28 dB

Mechanical:

Reflector Type
Size
Weight
Surface Accuracy
Focal Length
F/d Ratio
Feed Type
Mounting
Azimuth Adjustment
Finish
Connector
Operating Temperature

Wire Grid Parabola
20" x 24"
3.6 lbs
0.05" RMS
11"
0.46 - 0.56 Quasi Log Periodic
End Fire Array Stainless Steel
Hardware for 3/4"-2" O.D. Mast
Continuous
Powder Coat Paint, Gray
"N" Type Male
-40°C to +80°C

130094/130135

24 dBi QLP Parabolic Assembly

2150-2162	2400-2483	2500-2700
22 dB \pm 1 dB	23.5 dB \pm 1 dB	24 dB \pm 1 dB
47%	48%	50%
1.5:1	1.5:1	1.5:1
12.5° \pm 0.5°	10.0° \pm 1.0°	9.75° \pm .75°
-18 dB \pm 2dB	-20 dB \pm 3dB	-20 dB \pm 3dB

21 dB	21 dB	21 dB
28 dB	28 dB	28 dB
Vertical or Horizontal		
28 dB	28 dB	28 dB

Wire Grid Parabola
27" x 30"
5.3 lbs
0.05" RMS
15"
0.46 - 0.56 Quasi Log Periodic
End Fire Array Stainless Steel
Hardware for 3/4"-2" O.D. Mast
Continuous
Powder Coat Paint, Gray
"N" Type Male
-40°C to +80°C

World Headquarters USA

460 Calle San Pablo
Camarillo, CA 93012
Tel: (805) 987-9000
Fax: (805) 987-8359
sales@calamp.com

Latin America

Av. San Joao, 660 Sala 13
JD. Esplanada
Sao Jose dos Campos -
SP 12242-560
Tel/Fax: (55) 12 341 2264
calamppbr@netvale.com.

Asia & Pacific

Wharf Cable Tower #3802B
9 Hoi Shing Road
Tsuen Wan, N.T. Hong Kong
Tel: (85) 2 420-7081
Fax: (66) 2 489-1492
chuihor@HK.Super.NET

Europe, Middle East, & Africa

15 rue de la belle borne B.P. 10 003
95722 Roissy Aeroport CDG Cedex
France
Tel: (33) 1 49 19 8920
Fax: (33) 1 48 64 5255
sales@calamp.fr

C A L I F O R N I A A M P L I F I E R