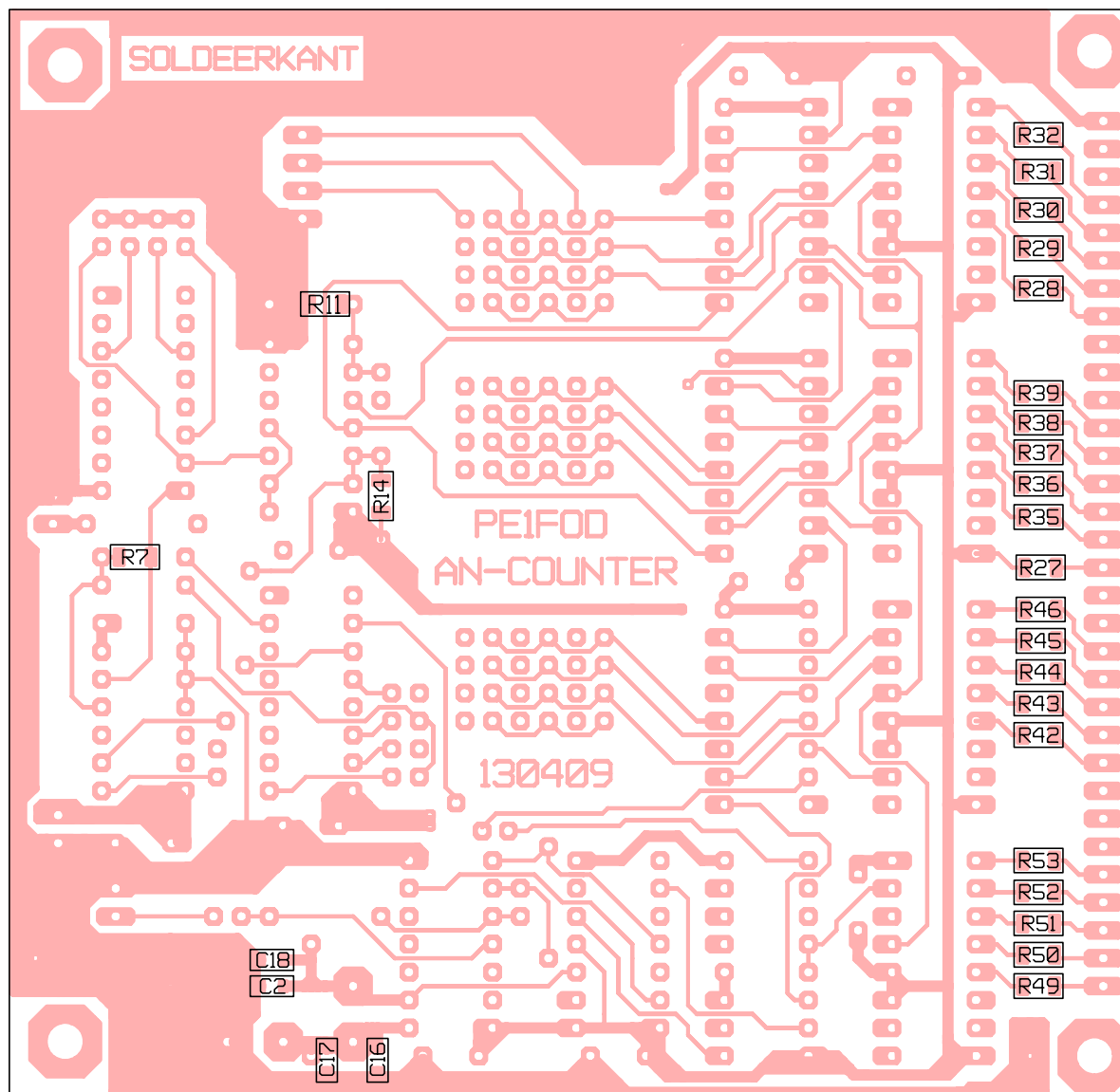


1 2 3 4 preset
Blank-1
+5V
prescaler

99x102.5



Item	Quantity	Reference		Part	p/s	
1	1	C1		2-22pF Trimmer		
2	1	C2	FOD	56pF smd0805	--	
3	4	C3,C4,C5,C6	FOD	1nF	--	
4	9	C7,C8,C9,C10,C11,C12,C13,	FOD	100nF 5mm		
		C14,C15				
5	1	C16	FOD	27pF smd0805	--	
6	1	C17	FOD	22pF smd0805	--	
7	1	C18	FOD	4.7pF smd0805	--	
8	4	CN1,CN2,CN3,CN4		HEADER 8P-S		
9	4	D1,D2,D4,D5	FOD	BAT83	--	
10	11	J2,J3,J4,J5,J6,J7,J8,J9,		HEADER 8P-2X4		
		J10,J11,J13				
11	1	J12		HEADER 4P-S		
12	3	JP1,JP2,JP4		HEADER 2		
13	3	R1,R12,R13		100k		
14	15	R7,R11,R14,R15,R16,R17,	FOD	12.4k smd1206	--	
		R18,R19,R20,R21,R22,R23,				
		R24,R25,R26				
15	1	R9	FOD	2k2	--	
16	29	R27,R28-,R29,R30,R31,R32,	FOD	220E smd1206	--	
		R33,R34,R35-,R36,R37,R38,				
		R39,R40,R41,R42-,R43,R44,				
		R45,R46,R47,R48,R49-,R50,				
		R51,R52,R53,R54,R55				
17	1	U1	FOD	SN74HCU04	0.31	0.31
18	1	U2	FOD	74VHC74	0.15	0.15
19	1	U4	FOD	HEF4020	0.22	0.22
20	1	U5	FOD	HEF4013	0.35	0.35
21	4	U6,U10,U12,U14	FOD	CD4029	0.31	1.24
22	1	U7	FOD	CD4093	0.26	0.26
23	4	U9,U11,U13,U15	FOD	CD4511	0.42	1.68
24	1	U16	FOD	74HC390	0.48	0.48
25	1	Y1	FOD	4MHz HC-49	1.01	1.01
26	1	AN-COUNTER	FOD	PCB	9.00	9.00
30	8	D6-D14, preset	FOD	BAT83	--	
31	4	Display	FOD	SC52-11EWA	0.63	2.52
(zonder pcb)				Totaal=		17.22
				Componenten=		8.22